



5.5+ ACRES

**MAJORS ROAD / 1000' FROM
RONALD REAGAN &**

LANIER TECH

***SEWERED**

***REZONABLE**

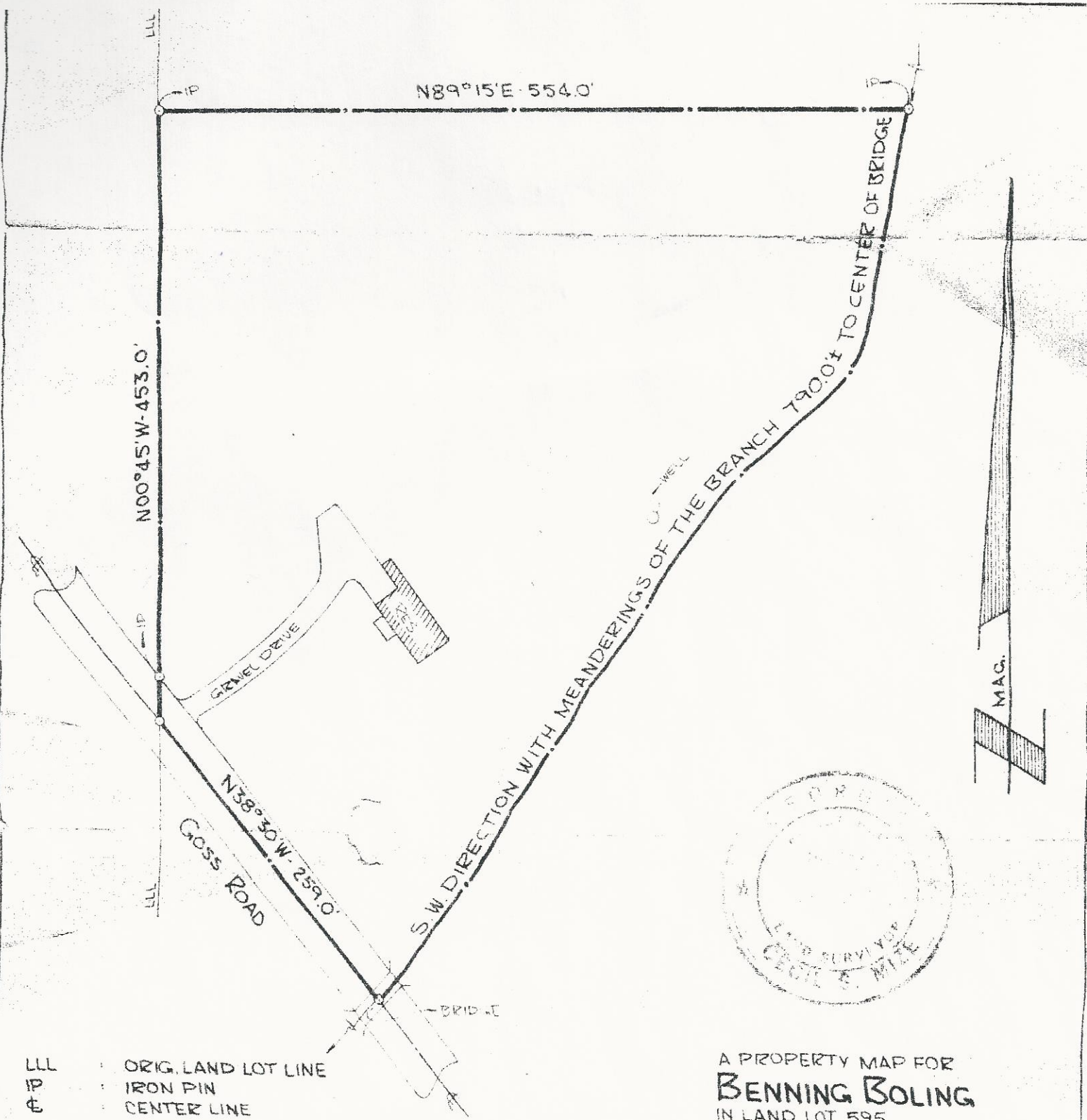
**SUITABLE FOR OFFICE &
PROFESSIONAL**

\$975,000

CONTACT: DAN WOLF 770-888-8889

Cell 678-371-4551

dan@wolf-realty.com



- LLL : ORIG. LAND LOT LINE
- IP : IRON PIN
- E : CENTER LINE

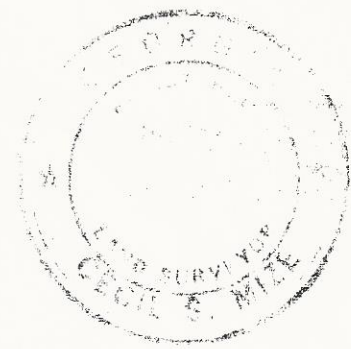
BOUNDARY TAKEN FROM PLAT BY
 THAD P. THOMAS, SURV. No. 1099
 TITLED BENNIE BOLING, DATED 7-13-66

HOUSE SPOTTED BY CECIL S. MIZE, 6-4-70

SCALE : 1" = 100.0'

ACRES : 5.80 MORE OR LESS

DATE : 6-4-70





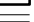


A PROPERTY MAP FOR
BENNING BOLING
 IN LAND LOT 595
 2ND DIST. ~ 1ST SEC.
 FORSYTH COUNTY, GEORGIA

IN MY OPINION THIS DEED IS A CORRECT
 REPRESENTATION OF THE LAND PLATD
 AND HAS BEEN FILED IN ACCORDANCE
 WITH THE REQUIREMENTS AND ALL
 CONDITIONS OF LAW.

Cecil S. Mize
 CECIL S. MIZE



LEGEND

-  2' Topo
-  TAX PARCEL
-  GA HWY 400
-  MAJOR ROAD
-  STREET



**Forsyth County Georgia
GIS Department**

The information included on this map has been compiled by Forsyth County staff from a variety of sources and is subject to change without notice. Forsyth County makes no representations or warranties, express or implied, as to accuracy, completeness, timeliness, or rights to the use of such information. Forsyth County shall not be liable for any general, special, indirect, incidental, or consequential damages including, but not limited to, lost revenues or lost profits resulting from the use or misuse of the information contained on this map. Any sale of this map or information on this map is prohibited except by written permission of Forsyth County.





LEGEND
 [Symbol] TAX PARCEL — STREET
 [Symbol] GA HWY 400
 [Symbol] MAJOR ROAD

N
 1 inch = 833 feet

**Forsyth County Georgia
 GIS Department**

The information included on this map has been compiled by Forsyth County staff from a variety of sources and is subject to change without notice. Forsyth County makes no representations or warranties, express or implied, as to accuracy, completeness, timeliness, or rights to the use of such information. Forsyth County shall not be liable for any general, special, indirect, incidental, or consequential damages including, but not limited to, lost revenues or lost profits resulting from the use or misuse of the information contained on this map. Any sale of this map or information on this map is prohibited except by written permission of Forsyth County.



